

Room Booking System — 10.1" RBS Panel

VK430

ATEN VK430 RBS Panel is a 10.1" touch-screen panel used to manage meeting or teaching spaces, from conference rooms, lecture halls, auditoriums to boardrooms and is configurable via ATEN RBS Configurator — centralized management software of RBS Panels — while integrating with ATEN Unizon™ Timetable and other mainstream calendar servers such as Microsoft 365 Calendar, Google Workspace Calendar, and Microsoft Exchange Server, and DingTalk to provide quick, yet smooth booking, reservation extension / cancellation, and availability allocation for all rooms in the system. It also shows users a clear overview of in-room devices on the RBS panels for easy selection of rooms that are perfect for their meetings.



Highlights

- Through ATEN RBS Configurator administrators can customize reservation settings and upgrade / manage each VK430 connected from afar.



- Users can supplement Room Booking System with an ATEN RBS infoPlayer VR610 to centralize room usage and availability information on a single display.



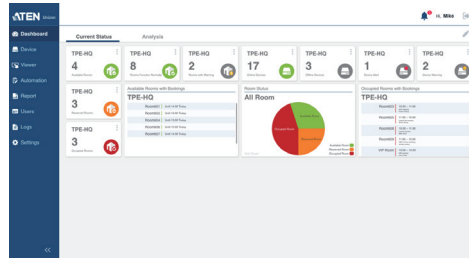
- With RBS Access Inspector VK401, the system enables exclusive card-access functionality to allow authorized users to efficiently book and check in meeting rooms, thereby contributing to the streamlined automation of meeting room operations.



**Works with The Whole
RBS Family**

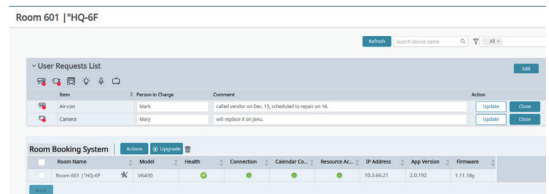
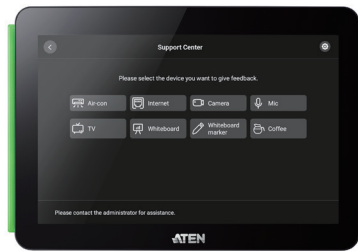
Seamless Integration with ATEN Unizon

Keeps room booking data in sync for efficient central management like prompt maintenance or facilitation of in-room device automation solutions.



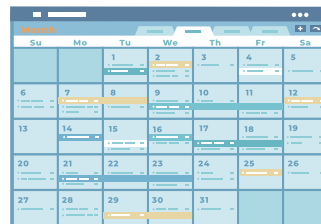
Request Tracking and Management with ATEN Unizon

- Allows on-screen request for cleaning / catering / repair / replacement or report of any issue occurs to the in-room equipment
- Notifications of requests are sent in real-time to administrators and are trackable on the Unizon platform



Mainstream Calendar Servers Supported

Supports integration with ATEN Unizon Timetable and mainstream calendar servers such as Microsoft 365 Calendar, Google Workspace Calendar, Microsoft Exchange Server, and DingTalk.



Landscape / Portrait Mode Selectable

Various templates suit versatile application requirements and panel mounting in either landscape or portrait orientation.

Classroom Template



Meeting Room Template



Power over Ethernet (PoE)

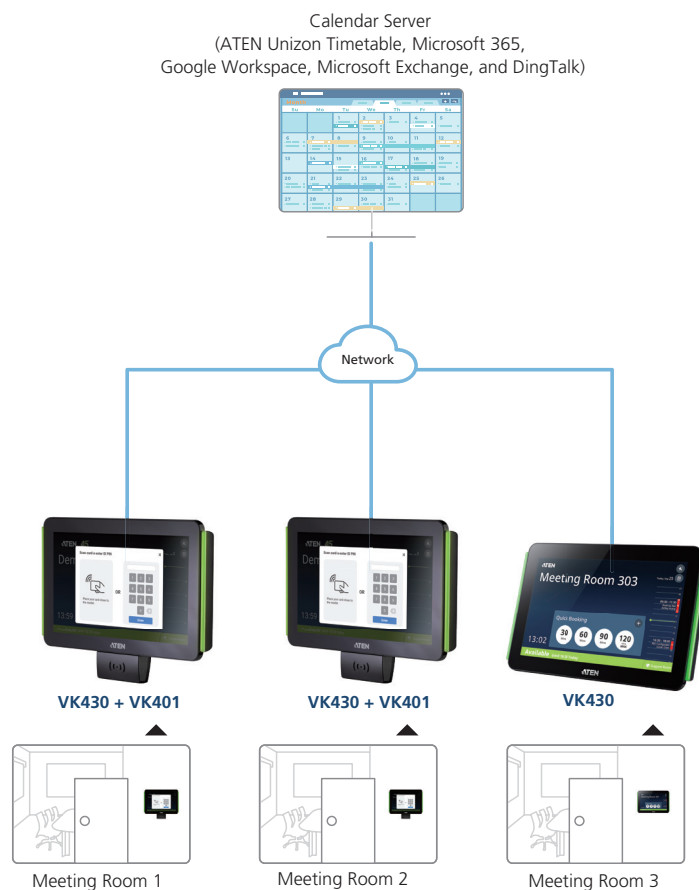
Enables data transmission while receiving power over an Ethernet cable to help simultaneously reduce installation costs and power consumption.

Built-In LED Light Bars	Illuminates in user-defined colors to allow any individual to know the usage status of the rooms (available / reserved / occupied) at a glance.
Easy, Flexible Installation	Supports 75*75 mm VESA mounting and comes with a standard wall mount kit as well as a 3M VHB Tape for easy installation onto any hard or glass surface.

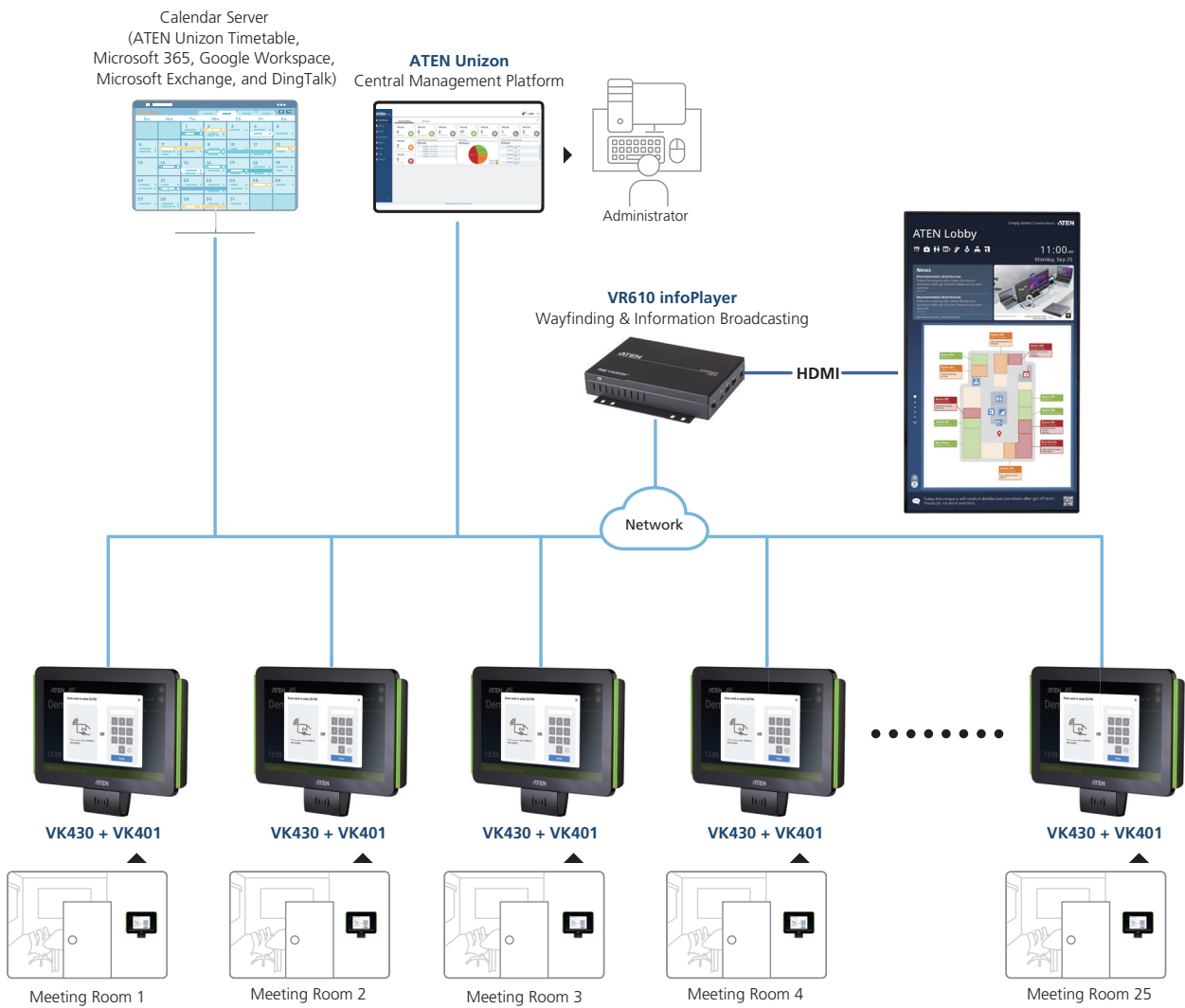
Features

- 10.1" capacitive touch-screen panel
- Supports integration with ATEN Unizon Timetable and mainstream calendar servers such as Microsoft 365 Calendar, Google Workspace Calendar, Microsoft Exchange Server, and DingTalk
- Multiple templates serve for versatile application purposes from academies to business hospitality
- Supports layout in Portrait and Landscape modes
- Supports RBS Configurator for batch upgrade, customizable booking options, and calendar settings
- Works with VR610 RBS infoPlayer to give users a glimpse of room status and floor plan through the VR610-connected displays
- In conjunction with the VK401, the system enables exclusive card-access functionality; only authorized users can scan cards to book and check in meeting rooms and facilitate conference room automation
- Supports central management through ATEN Unizon to allow administrators to monitor managed devices in real time, generate room usage analyses, and update app in batch
- Supports TCP protocol for third-party system integration
- Supports Power over Ethernet (PoE), which allows it to receive power and communication over a single Ethernet cable
- LED light bars illuminating user-defined colors to indicate the room's availability at a glance
- Preinstalled with a wall mount kit and provided with 3M VHB™ Tape for easy mounting onto a hard or glass wall
- 75*75 mm VESA-compliant for flexible mounting across various installation scenarios

Basic Application



Advanced Application



Specifications

	VK430
Processor	Quad-core
Memory	
SDRAM	2 GB
Flash	16 GB
Panel Spec	
Display Type	TFT-LCD
Size	10.1"
Touch Screen	Capacitive
Resolution	1280 x 800
Aspect Ratio	16 : 10
Color Depth	8 bit
Contrast Ratio	800 : 1
Backlight	LED
Viewing Angle	± 85° (H), ± 85° (V)
Luminance	500 cd/m ²
Interfaces	
Ethernet	1 x RJ-45 Female, 10 / 100 / 1000 BaseT
USB	1 x USB Type-A
Power Inputs	
Power over Ethernet (PoE)	802.3 at PoE+
Power Consumption	DC 12V:17.8W; PoE:20W
Environmental	
Operating Temperature	0 – 40 °C
Storage Temperature	-10 – 55 °C
Humidity	10 – 80% RH, Non-Condensing
Physical Properties	
Housing	Plastic
Weight	0.68 kg
Dimensions (L x W x H)	26.30 x 17.78 x 2.45 cm

ATEN International Co., Ltd.

3F, No.125, Sec. 2, Datung Rd., Sijhih District., New Taipei City 221, Taiwan
 Phone: 886-2-8692-6789 Fax: 886-2-8692-6767
 www.aten.com E-mail: marketing@aten.com

Product information is subject to change without prior notice.

Released: 01/2026 V9.0

© Copyright 2026 ATEN® International Co. Ltd.
 ATEN and the ATEN logo are registered trademarks of ATEN International Co., Ltd.
 All rights reserved. All other trademarks are the property of their respective owners.

