

# CV130A / CV130B

## Sun Console Converters

- CV130A is a signal converter specifically designed for SUN systems. They can be used with KVM switches. Both models have SUN-supported built-in 13W-3 video out and Mini Din-8 keyboard and mouse ports.



CV130A



CV130B

OS Support

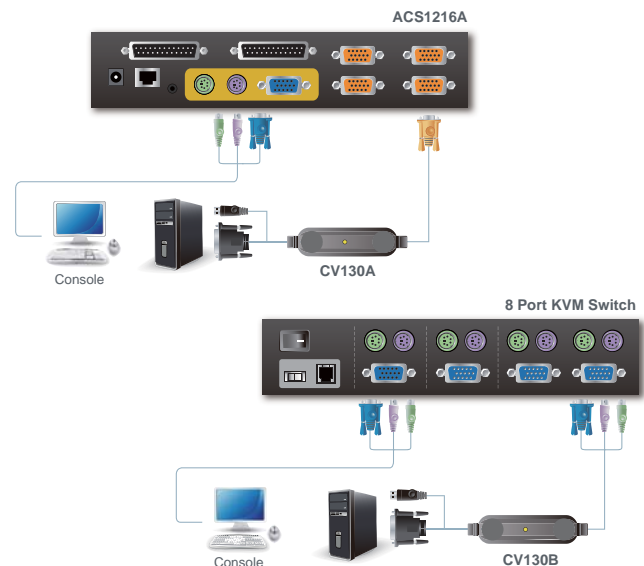
Sun Legacy



## Features

- Translates PS/2 keyboard, mouse, and VGA signals to legacy Sun keyboard, mouse and monitor signals
- Compatible with Sun systems
- Compatible with ATEN's SPHD\*(CV130A), or PS/2 (CV130B) equipped KVM switches and PS/2 console extenders
- External power adapter not required
- High quality molded connectors
- Supports PS/2 mice and Microsoft Intellimouse
- Composite sync video support
- Supports high resolution video - including Sun 1152 x 900, 1280 x 1024, and 1600 x 1200

\*Compatible with SPHD PS/2 and Combo products only.



## Specification

Function			CV130A	CV130B
Console Connections			1	
Connectors	To Sun	Keyboard/ Mouse	1 x 8-pin Mini-DIN Male (Purple)	
		Video	1 x 13W3 Male (Gray)	
	To Switch	Keyboard	1 x SPHD-15 Male (Yellow)	1 x 6-pin Mini-DIN Male (Purple)
		Video		1 x HDB-15 Female (Blue)
		Mouse		1 x 6-pin Mini-DIN Male (Green)
LEDs	Power		1 (Orange)	
Emulation	Keyboard/ Mouse		Sun	
Video			1600 x 1200	
Environment	Operating Temp.		0-50°C	
	Storage Temp.		-20-60°C	
	Humidity		0-80% RH, Non-condensing	
Physical Properties	Housing		Plastic	
	Weight		0.20 kg	0.24 kg
	Cable Length		1.8 m	
	Dimensions (L x W x H)		10.65 x 4.20 x 2.07 cm	10.65 x 4.20 x 2.07 cm

\* The specifications and pictures are subject to change without notice.

