

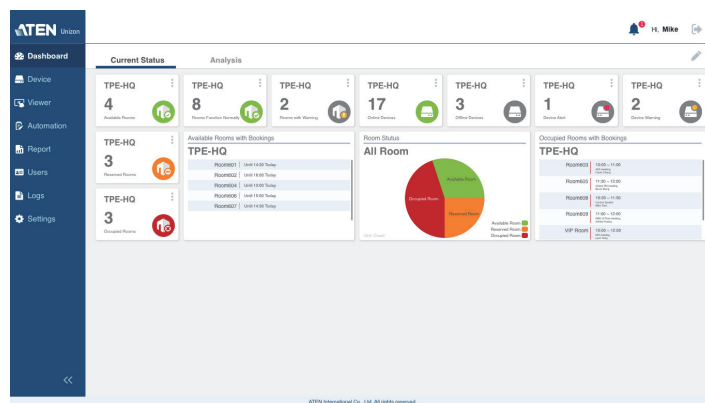
ATEN Unizon™

Global AV Management Platform

ATEN Unizon is a server-based software for remote centralized monitoring, control, and management of Ethernet-based ATEN Video Matrix Switches, ATEN Room Booking System, and 3rd party devices (such as projectors, lights, and AV devices) connected to ATEN Control System Controllers.

By providing real-time access to device status, the platform streamlines daily AV/IT management, troubleshooting, analytics, and automation, making it the perfect solution to manage mass device deployments.

ATEN Unizon also manages user profiles. With VK401 attached to VK430 / VK330, ATEN Unizon gives access rights to authorized personnel when check in on RBS panel. Besides, by integrating with VK control system, it facilitates conference room automation solutions.



Features

- Centralized device monitoring, control, and management
 - ATEN Video Matrix Switches, Room Booking System, Control System solutions, including the managed third-party devices
 - Detection of device statuses, such as lamp hour of a projector and connection status for remote troubleshooting and maintenance
 - Batch device control and firmware upgrades
- Intuitive user interface for large-scale Pro AV applications, easy room monitoring and management across multiple locations
 - 5-level deployment tree
 - Supports room view and floor view
 - Configurable users access rights
- Predefined scenarios for automation and task scheduling
 - Provide meeting scenarios to choose and triggers actions from controllers
 - Automatically turn on / off lights, air-con, meeting room devices based on predefined actions
- Dashboard for current status and analytics
 - Current status info for real-time troubleshooting
 - Analytics of past usage records for future optimization
 - Preset rules for generating regular reports for optimizing device maintenance arrangement
- User profiles are managed in the Directory, including user name, email, pin code and card numbers etc.
- Logs device usage, notifications, and emails for abnormal events for usability analysis and future optimization
- Supports mainstream web browsers
- License of different amount of controlled devices can be purchased based on users' need.

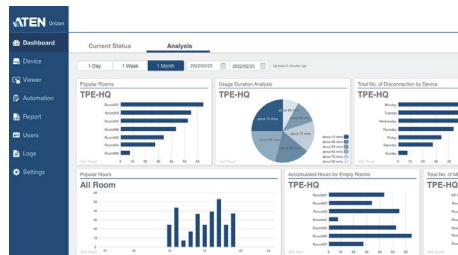
Highlights

Dashboard for Current Room and Device Status



- Monitor device conditions and instantly get alerted to potential issues for immediate troubleshooting and maintenance.
- Have real-time room status at a glance and better space arrangement from remote site.

Analytics and Customized Reports



Past usability records are organized into insightful analytics for future optimization to avoid potential failures and automatically emails of reporting rules can be set to keep users informed at all times.

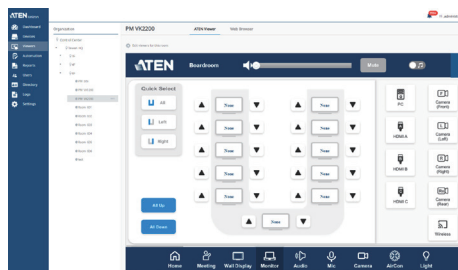
Global Control and Automation

The screenshot shows the ATEN dashboard with a sidebar menu on the left. The main area is titled 'Automation' and 'Automation Schedules'. It displays a table with columns for Location, Room, Controller, Power, and Device. The table lists various rooms and their associated controllers and power states.

Location	Room	Controller	Power	Device
Room001	Room001	VK2100-1D01	Power	Device All Off
Room002	Room002	VK2100-1D01	Power	Device All Off
Room003	Room003	VK2100-1D01	Power	Device All Off
Room004	Room004	VK2100-1D01	Power	Device All Off
Room005	Room005	VK2100-1D01	Power	Device All Off
Room006	Room006	VK2100-1D01	Power	Device All Off
Room007	Room007	VK2100-1D01	Power	Device All Off
Room008	Room008	VK2100-1D01	Power	Device All Off
Room009	Room009	VK2100-1D01	Power	Device All Off
Room010	Room010	VK2100-1D01	Power	Device All Off
Room011	Room011	VK2100-1D01	Power	Device All Off
Room012	Room012	VK2100-1D01	Power	Device All Off
Room013	Room013	VK2100-1D01	Power	Device All Off
Room014	Room014	VK2100-1D01	Power	Device All Off
Room015	Room015	VK2100-1D01	Power	Device All Off
Room016	Room016	VK2100-1D01	Power	Device All Off
Room017	Room017	VK2100-1D01	Power	Device All Off
Room018	Room018	VK2100-1D01	Power	Device All Off
Room019	Room019	VK2100-1D01	Power	Device All Off
Room020	Room020	VK2100-1D01	Power	Device All Off

Set devices to perform routine tasks at a predefined time by scheduling or allow users to trigger devices connected to controllers to perform actions by different meeting scenarios.

Intuitive Remote Control via Embedded Web Consoles



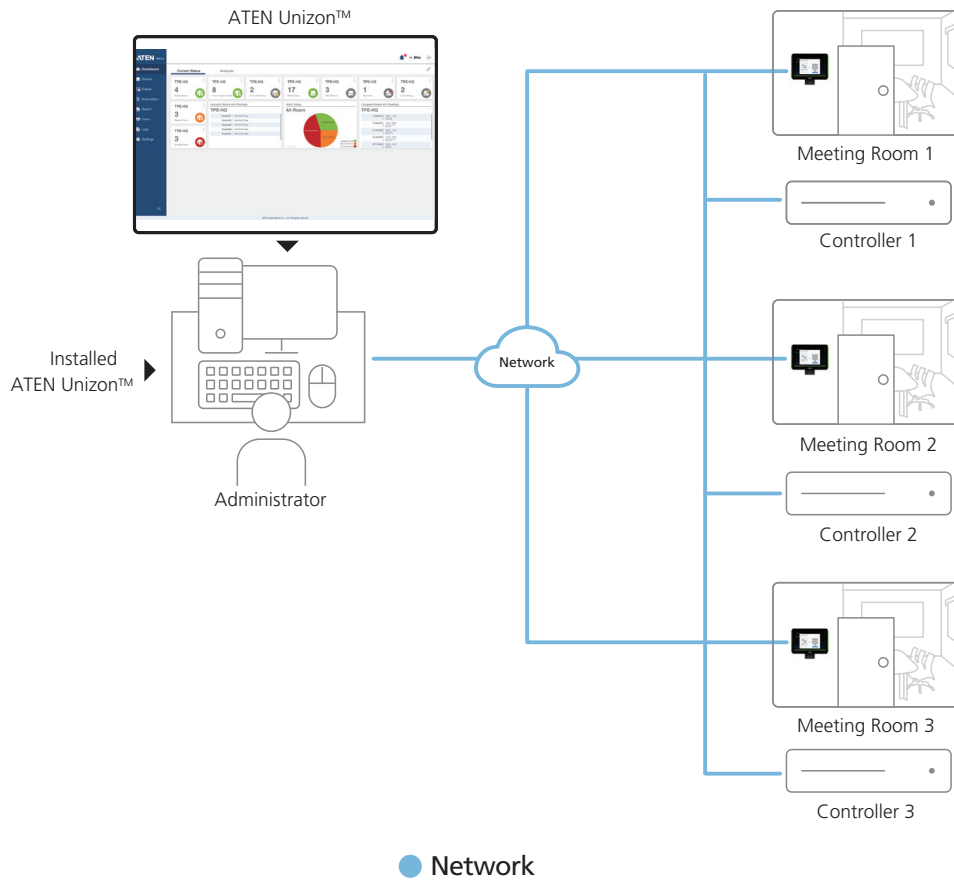
Web consoles enable remote access to room equipment, including Web Viewer from ATEN Control System family and third-party WebUI.

Device Location Tree and User Access Permission

The screenshot shows the ATEN dashboard with a sidebar menu on the left. The main area is titled 'Device Location Tree' and 'User Access Permission'. It displays a tree view of the organization structure, including rooms, floors, buildings, and cities.

Organization	Room	Scenario	Device	Model	Health	Connection	Controller ID
Room 605	Room 605	Scenario	Device	Model	Health	Connection	Controller ID

- Intuitive location of devices by 5-level organization tree from room, floor, building, and even by city.
- Define user roles and respective permission access levels on a room-by-room basis.



Minimum System Requirements

	ATEN Unizon
Processor	3.2 GHz
OS Support	Windows 8 (32 / 64 bit) and above
Storage Capacity	10 GB available hard disk space
System Memory	8 GB
Web Browser	Internet Explorer v.11 or later Microsoft Edge v.79.0.309 or later Firefox v.72.0 or later Google Chrome v.80.0 or later
License	
Basic	No. of Managed Devices: 50 Valid Period: Lifetime
Standard	No. of Managed Devices: 500 Valid Period: Lifetime

Note: For more information about license types, pricing, and promotion, please contact your regional sales representative for details.

ATEN International Co., Ltd.

3F., No.125, Sec. 2, Datung Rd., Sijhih District., New Taipei City 221, Taiwan
Phone: 886-2-8692-6789 Fax: 886-2-8692-6767
www.aten.com E-mail: marketing@aten.com

Product information is subject to change without prior notice.

Released: 03/2024 V5.0

© Copyright 2024 ATEN® International Co. Ltd.
ATEN and the ATEN logo are registered trademarks of ATEN International Co., Ltd.
All rights reserved. All other trademarks are the property of their respective owners.

