

ORV3 Power Shelf Rails

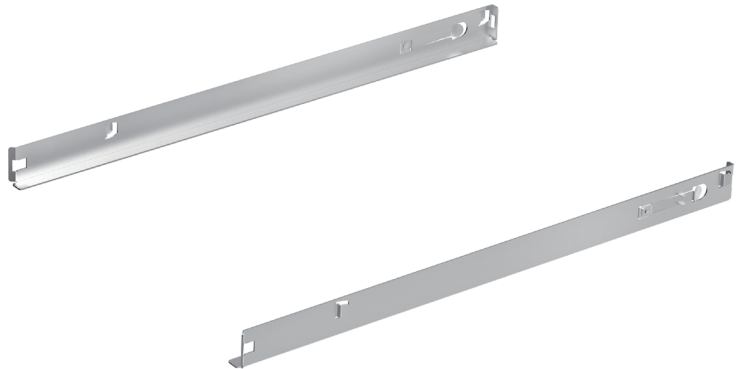
RA8200

ATEN provides a wide range of flexible rack accessories designed to meet the needs of IT professionals in managing racks and installing equipment. Each accessory is engineered for reliable functionality, ensuring equipment safety and operational efficiency while adapting to diverse rack configurations.

ATEN ORV3 Power Shelf Rails is a dedicated accessory for ORV3 racks, designed in compliance with the Open Rack V3 Base Spec developed by the Open Compute Project (OCP). Installed on both sides of the rack, it is specifically used to support ORV3 Power Shelf units. With a total load capacity of up to 30 kg, it ensures stable installation and improves the overall structural integrity of the rack.

Features

- Designed to support ORV3 Power Shelf units
- Maximum load capacity of 30 kg for stable and secure installation
- 1 OU (Open Unit) height design, installable at any rack unit position with flexible adjustment to fit the installation needs of Power Shelf modules
- Compatible with ATEN standard ORV3 racks (44 OU / 48 OU) and customized racks (6 OU / 25 OU)



Specifications

	RA8200
Physical Properties	
U Spaces	1OU
Overall Height	47 mm
Overall Width	26 mm
Overall Depth	711 mm
Thickness	2.0 mm
Color	Zinc Plated
Load Capacity	30 kg

ATEN International Co., Ltd.

3 F., No. 125, Sec. 2, Datong Rd., Xizhi Dist., New Taipei City 221, Taiwan
 Phone: 886-2-8692-6789 Fax: 886-2-8692-6767
www.aten.com E-mail: marketing@aten.com

Product information is subject to change without prior notice.

Released: 09/2025 V1.0

© Copyright 2025 ATEN® International Co. Ltd.
 ATEN and the ATEN logo are registered trademarks of ATEN International Co., Ltd.
 All rights reserved. All other trademarks are the property of their respective owners.

