

## Solid Rack Mount Shelf

RA3200 / RA3300 / RA3400

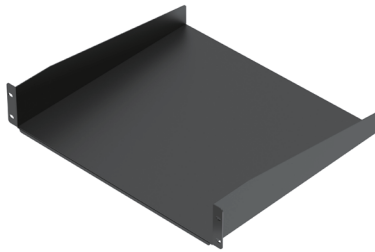
ATEN offers a wide range of flexible rack accessories designed to meet the needs of IT professionals in managing racks and installing equipment. Every accessory is functional, ensuring safe operation and handling, and is adaptable to suit various rack configurations.

The ATEN Solid Rack Mount Shelf complies with the latest EIA / ECA-310-E standards and can be installed at any height on adjustable mounting rails. It is ideal for storing small devices or accessories within the rack, helping to maintain a clean and professional rack interior. Available in 178 mm, 250 mm, and 400 mm depth options, the shelf is compatible with ATEN or other brands of 19-inch racks, server racks, and network racks.

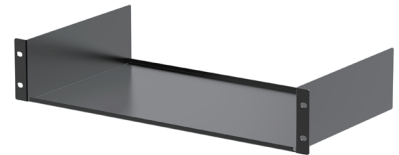
**Note:** RA3300 also available for white version.



RA3200



RA3300



RA3400

### Features

- Ideal for storing small equipment or accessories inside the rack
- Compatible with 19-inch racks, server racks, and network racks
- Complies with the latest EIA / ECA-310-E standards, offering reliable load-bearing and structural stability

## Specifications

	RA3200	RA3300	RA3400
<b>Physical Property</b>			
U Spaces	1U	2U	2U
Overall Height (mm)	44	88	88
Overall Width (mm)	482		
Overall Depth (mm)	178	400	250
Thickness (mm)	1.6		
Color	Black	White / Black	Black
Max. Load Capacity	15 kg	20 kg	15 kg

### ATEN International Co., Ltd.

3 F., No. 125, Sec. 2, Datong Rd., Xizhi Dist., New Taipei City 221, Taiwan  
 Phone: 886-2-8692-6789 Fax: 886-2-8692-6767  
 www.aten.com E-mail: marketing@aten.com

Product information is subject to change without prior notice.

Released: 09/2025 V1.0

© Copyright 2025 ATEN® International Co. Ltd.  
 ATEN and the ATEN logo are registered trademarks of ATEN International Co., Ltd.  
 All rights reserved. All other trademarks are the property of their respective owners.

