

Sliding Shelf

RA2400 / RA2500

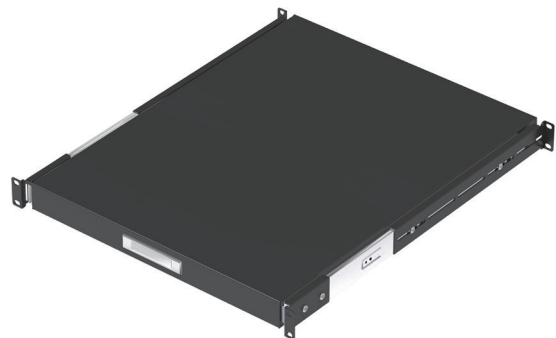
ATEN offers a variety of flexible rack accessories to support IT professionals in managing racks and installing equipment. All accessories are functional, ensuring the safe operation of equipment and personnel, and can be flexibly applied to suit various rack configuration needs.

The ATEN Sliding Shelf complies with the latest EIA / ECA-310-E standards. Designed for structural stability and durability, it is an ideal tool for data center operations. During maintenance or operation, IT personnel can pull out the shelf to place a laptop, keyboard, or testing equipment, and then slide it back into the rack to save aisle space.

With a maximum load capacity of 25 kg, the shelf is available in 400 mm and 550 mm depth options, and in white or black variants. It is compatible with ATEN or third-party 19-inch racks, server racks, and network racks, and can be installed at any height along the rack's adjustable mounting rails.



RA2500 White



RA2500 Black

Features

- Pull-out design for placing laptops, keyboards, or test equipment during operation or maintenance, then sliding back to save aisle space, with a maximum load capacity of 25 kg
- Suitable for 19-inch, server, or network racks
- Complies with the latest EIA / ECA-310-E standards for strength and structural stability
- Available in white and black variants

Specifications

	RA2400	RA2500
Physical Property		
U Spaces	1U	
Overall Height (mm)	44	
Overall Width (mm)	482	
Overall Depth (mm)	400	550
Color	White / Black	
Max. Load Capacity	25 kg	

Compatible with ATEN's 19-inch racks

Sliding Shelf Depth (Model)	Compatible with racks	
	Depth	Rack Type
400 mm (RA2400)	600–750 mm	19-inch Rack / Server Rack / Network Rack
550 mm (RA2500)	900–1200 mm	

ATEN International Co., Ltd.

3 F., No. 125, Sec. 2, Datong Rd., Xizhi Dist., New Taipei City 221, Taiwan
 Phone: 886-2-8692-6789 Fax: 886-2-8692-6767
 www.aten.com E-mail: marketing@aten.com

Product information is subject to change without prior notice.

Released: 09/2025 V1.0

© Copyright 2025 ATEN® International Co. Ltd.
 ATEN and the ATEN logo are registered trademarks of ATEN International Co., Ltd.
 All rights reserved. All other trademarks are the property of their respective owners.

