



ATEN Altusen™ SN0108/SN0116 Serial Console Server Quick Start Guide

© Copyright 2014 ATEN™ International Co., Ltd. www.aten.com
Altusen and the Altusen logo are trademarks of ATEN International Co., Ltd.
All rights reserved. All other trademarks are the property of their respective owners.
This product is RoHS compliant PAPE-1214-C01G Printing Date: 10/2014



All information, documentation, firmware, software utilities, and specifications contained in this package are subject to change without prior notification by the manufacturer. Please visit our website <http://www.aten.com/download/?cid=dds> for the most up-to-date versions.

Online Registration
• <http://eservice.aten.com>

Technical Phone Support

International:

• 886-2-8692-6959

China:

• 86-10-5255-0110

Japan:

• 81-3-5615-5811

Korea:

• 82-2-467-6789

North America:

• 1-888-999-ATEN Ext: 4988

United Kingdom:

• 44-8-4481-58923



1 Package Contents

The complete Package consists of :

- 1 SN0108 or SN0116 Serial Console Server
- 1 Power Cord
- 1 Rack Mount Kit (Brackets and Philips Head Hex M3 x 8 screws)
- 1 Foot Pad Set (4 pcs.)
- 1 Software CD
- 1 User Instructions

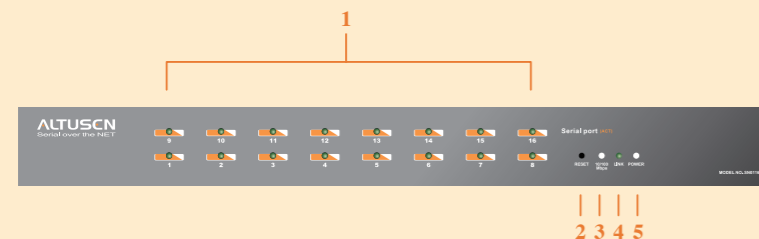
Important Notice

Considering environmental protection, ATEN does not provide a fully printed user manual for this product. If the information contained in the Quick Start Guide is not enough for you to configure and operate your product, please visit our website www.aten.com, and download the full user manual.

2 SN0108 / SN0116 (Front View)

- 1 Port LEDs
- 2 Reset Switch
- 3 10/100 Mbps Data LED
- 4 Link LED
- 5 Power LED

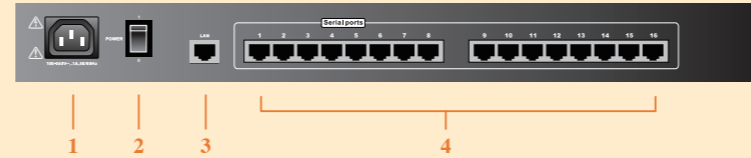
* The diagram shows the SN0116 model. The SN0108 only has one row LEDs *



3 SN0108 / SN0116 (Rear View)

- 1 Power Socket
- 2 Power Switch
- 3 LAN Port
- 4 Serial Ports

* The diagram shows the SN0116. The SN0108 only has 8 serial ports.

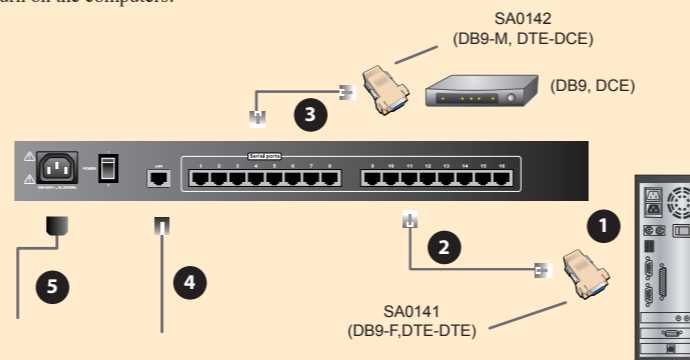


4 Requirements

- Sun's Java 2 JRE 1.4.2 or higher must be installed on your computer. Java is available for free download from the Sun Java website: <http://java.sun.com>
- The devices that connect to the SN0108 / SN0116 must support the RS-232 protocol or RS-232 terminal operations
- Virtual COM port driver (Real COM port) support requires Windows 98 or higher (Windows systems); or Linux kernel 2.2 or higher (Linux systems).

5 Installation

1. For each server or serial device, plug an RJ-45 to serial adapter into its serial port.
2. Use standard Ethernet cable to connect the adapter to any available port on the SN0108 / SN0116's rear panel.
3. If you choose to install a serial modem for OOB operation, use standard Ethernet cable to connect any available port on the SN0108 / SN0116's rear panel to a DTE to DCE serial adapter, then plug the adapter into the modem's serial port.
Note: This step is optional.
4. Plug the cable that connects the SN0108 / SN0116 to the network or the Internet into its LAN port.
5. Use the AC power cord provided with this package to connect the SN0108 / SN0116's Power Socket to an AC power source.
6. Turn on the computers.



7 Operation

The most convenient way to operate the SN0108/SN0116 is with an internet browser.

- A** To ascertain and set an IP address for the SN0108/SN0116:
- Run IPInstaller.exe
 - Click "Enumerate" to refresh the Device List if necessary
 - Select the device • Select "Obtain an IP address automatically (DHCP)"
 - Click "Set IP" and wait for the IP setting procedure to finish

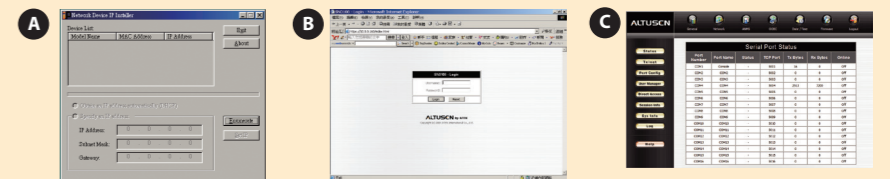
Note: If your installation uses fixed IP addresses, select "Specify an IP address", key in the appropriate IP information for the IP address, Submask, and Gateway, then click "Set IP"

- B**
1. Open your browser and specify the IP address of the SN0108/SN0116 you want to access in the browser's URL location bar.
 2. A Security Alert dialog box appears. Accept the certificate. A login dialog box, like the one below, appears:
 3. Provide a valid Username and Password (set by the SN0108/SN0116 administrator), then Click Login to continue.

If you are the administrator, and are logging in for the first time, use the default Username: **administrator**; and the default Password: **password**.

Note: For security purposes, we strongly recommend you remove these and give yourself a unique Username and Password with the appropriate Administrator permissions. This setting can be found under "General" setting in the main screen.

- C** After you have successfully logged in, the SN0108/SN0116 Main Screen appears:



8 Specifications

Function		SN0108	SN0116
Serial Connectors	To Devices	8 x Serial device jacks	16 x Serial device jacks
	To LAN	1 x RJ 45 Socket	
Power Connector		1 x 3-prong AC Socket	
LEDs	Link (LAN)	1 (green)	
	10/100 Mbps	1 (orange/green)	
	Power	1 (blue)	
	RS-232 Ports	8 (green)	16 (green)
Switches	Power	1 Rocker	
	Reset	1 Semi-recessed pushbutton	
I/P Rating		100-240VAC; 50/60Hz; 1A	
Power Consumption		120V/8W; 230V/8W	
Environment	Operating Temp.	0-40°C	
	Storage Temp.	-20-60°C	
	Humidity	0-80% RH, Non-Condensing	
Physical Properties	Housing	Metal	
	Weight	3.3kg	3.4 kg
	Dimensions (L x W x H)	43.72 x 20.98 x 4.40 cm (19"/1U)	

* Battery Replacement

This equipment is provided with a replaceable lithium battery: CR2032 3V. Replacement by an incorrect type may result in an explosion.

CAUTION!
RISK OF EXPLOSION IF BATTERY IS REPLACED BY AN INCORRECT TYPE. DISPOSE OF USED BATTERIES ACCORDING TO THE INSTRUCTIONS.