



KVM over Wireless (KW1000) QUICK START GUIDE

© 2005 ALTUSEN. All rights reserved. All Other trademarks are the property of their respective owners. PAPE-1214-A00 F©

2

System Requirements



This section details the required hardware components for successful installation and use of the KW1000

Console

- Pentium 3 with 1 GHz processor or higher
- Screen resolution is at 1024 x 768 or higher

Computers

To use and access the KW1000 successfully, your computer requires the following:

- Windows – DirectX 7.0 or higher
- Java – Sun's Java 2 JRE 1.4 or higher

1

Package Contents



The complete KW1000 package consists of:



1x

- KW1000 KVM over Wireless Control Unit



1x

- CS Custom KVM Cable Set



1x

- Power Adapter



1x

- Software CD



1x

- Quick Start Guide
- User Manual



1x

- Warranty Registration Card

3

The KW1000 Unit (Front View)

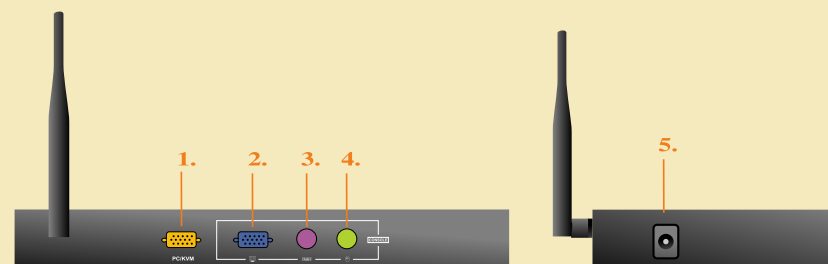


1. Reset / FW
2. Tx / Rx
3. Link LED
4. Power LED
5. WLAN
6. WLAN Reset
7. Antenna



4

The KW1000 Unit (Rear View)



1. PC / KVM
2. Local Console / Video
3. Local Console / Keyboard
4. Local Console / Mouse
5. Power Jack

5

Hardware Installation



To prevent damage to your equipment, please do the following before you begin installation:



- Make sure that power to all the devices you will be connecting up have been turned off. You must unplug the power cords of any computers that have the Keyboard Power On function.



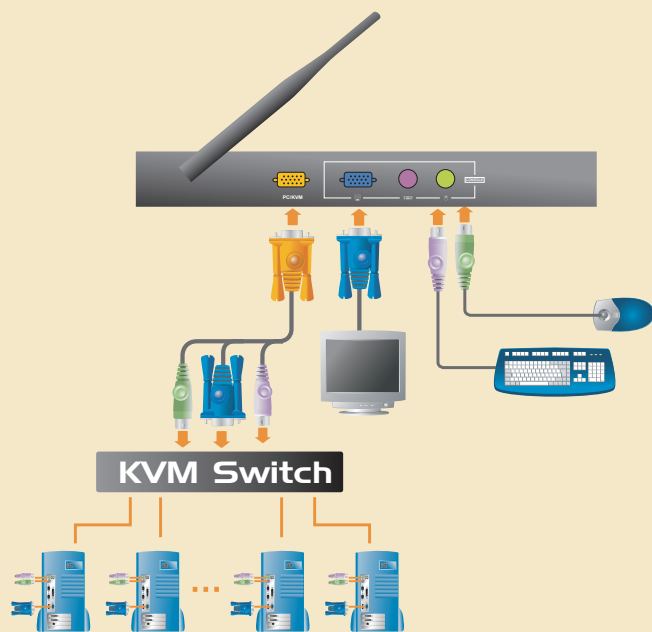
- Make sure that all devices on the installation are properly grounded.

6

Hardware Installation



1. Plug the local administrator's keyboard, mouse, and monitor into the unit's console ports.
2. Use the KVM cable provided with this package to connect the KW1000's KVM port to the Keyboard, Video and Mouse ports of the server or KVM switch that you are installing.
3. Power up the following device in this order: KVM → PC → KW1000
4. Plug the power adapter into the power jack



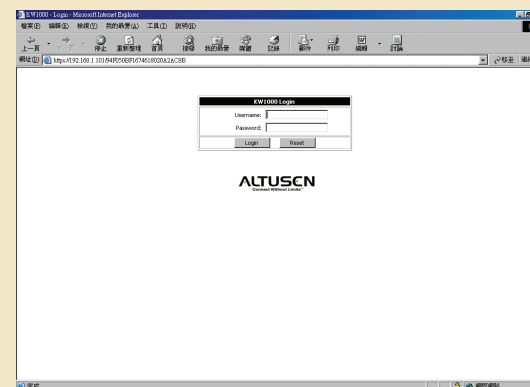
7

Software Installation

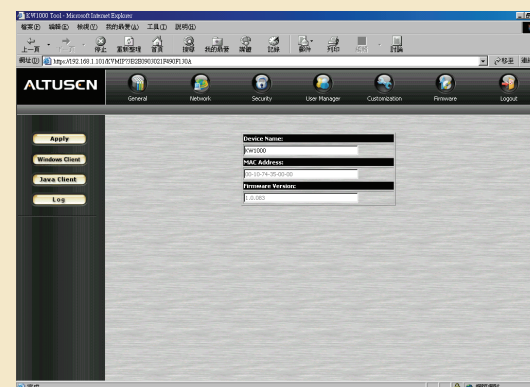


KW1000 has fixed IP address of 192.168.1.101 with a subnet mask of 255.255.255.0. Be sure to configure your computer's wireless card for a corresponding IP address (192.168.1.1 – 192.168.1.254).

1. Open your browser and specify the KW1000's IP address in the browser's URL location bar:
2. Provide a valid User name and Password, then click **Login** to continue.



After you have successfully logged in, the KW1000 main screen appears:



8

Screen Elements



Icon	Purpose
Apply	Saves the changes you make in the administration dialog boxes, but does not implement the changes. The changes only go into effect when you enable Reset on exit and log out.
Windows Client	Allows users to connect to the KW1000 using Windows software, and to remotely control the connected server.
Java Client	Allows users that have Java installed to connect to KW1000 and to remotely control the connected server.
Log	All the events that take place on the KW1000 are recorded in a log file.
Logout	Click this icon to log out and end your KW1000 session.