

ALTUSCEN™

Enterprise KVM Solutions by ATEN

Online Registration
 International:
 • <http://support.aten.com>
 North America:
 • http://www.aten-usa.com/product_registration

Technical Phone Support
 International:
 • 886-2-8692-6959
 China:
 • 86-10-5255-0110
 Japan:
 • 81-3-5323-7178
 Korea:
 • 82-2-467-6789
 North America:
 • 1-888-999-ATEN (ATEN TECH)
 • 1-732-359-1703 (ATEN NJ)
 United Kingdom:
 • 44-8-4481-58923

KH2508/KH2516 2-Console 8/16-Port Cat 5 KVM Switch Quick Start Guide

© Copyright 2010 ATEN International Co., Ltd. www.aten.com
 Altusen and the Altusen logo are trademarks of ATEN International Co., Ltd.
 All rights reserved. All other trademarks are the property of their respective owners.
 This product is RoHS compliant PAPE-1214-L00G Printing Date: 04/2010



1 Package Contents

- | | |
|------------------------------------|-------------------------|
| 1 KH2508 / KH2516 Cat 5 KVM Switch | 1 Rack Mount Kit |
| 1 Power Cord | 1 Foot Pad Set (4 pcs.) |
| 1 Grounding Wire | 1 User Manual |
| 1 Firmware Upgrade Cable | 1 Quick Start Guide |

2 Requirements

Consoles

- The following hardware components are required for each KVM console:
- A VGA, SVGA, or multisync monitor capable of displaying the highest resolution provided by any computer in the installation
 - Keyboard and mouse (PS/2 or USB)

Computers

- The following hardware components are required for each computer:
- A VGA, SVGA, or multisync video graphics card with an HDB-15 port; or, for Sun legacy systems, a Sun 13W3 video port
 - PS/2 mouse and keyboard ports (6-pin Mini-DIN), or at least one USB port; or, for Sun legacy systems, a Sun style keyboard port (8-pin Mini-DIN)

KVM Adapter Cables

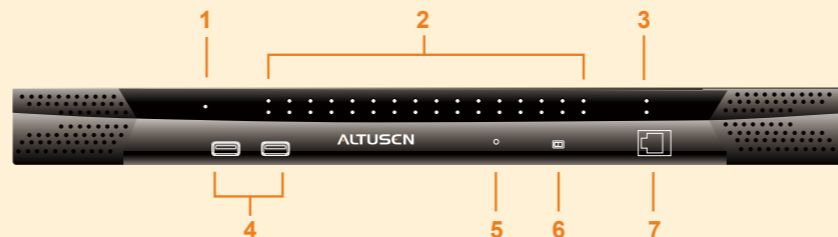
Function	Model Number
For PS/2 computers	KA9520
For USB computers	KA9570
For Sun legacy systems	KA9130
For Sun USB systems	KA9170
For serial devices	KA9140

Cables

Function	Type
KVM adapter cable to KH2508 / KH2516	Cat 5e/6 cable
Cascading	Cat 5e/6 cable

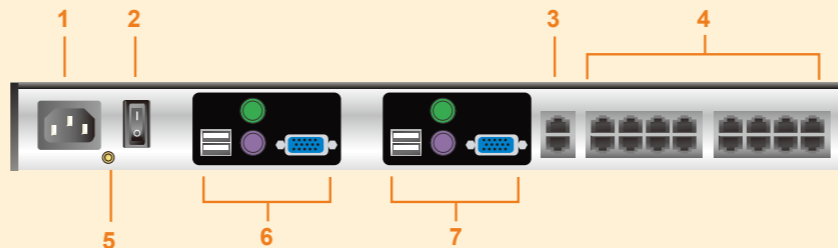
3 Hardware Review (Front View)

- | | |
|----------------------|-------------------------------------|
| 1. Power LED | 5. Reset Button |
| 2. Port LEDs | 6. Firmware Upgrade Recovery Switch |
| 3. Cascade Port LEDs | 7. Firmware Upgrade Port |
| 4. USB Ports | |



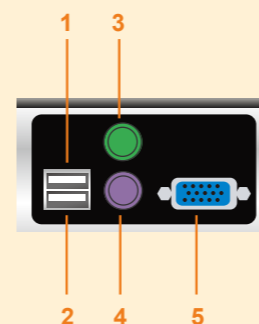
4 Hardware Review (Rear View)

- | | |
|---------------------|---------------------------|
| 1. Power Socket | 5. Grounding Terminal |
| 2. Power Switch | 6. Console 1 Port Section |
| 3. Cascade Ports | 7. Console 2 Port Section |
| 4. KVM Port Section | |



5 Hardware Review (Local Console Connection)

- | |
|-----------------------|
| 1. USB Mouse Port |
| 2. USB Keyboard Port |
| 3. PS/2 Mouse Port |
| 4. PS/2 Keyboard Port |
| 5. HDB-15 Video Port |



6 Hardware Installation

Single Level Installation

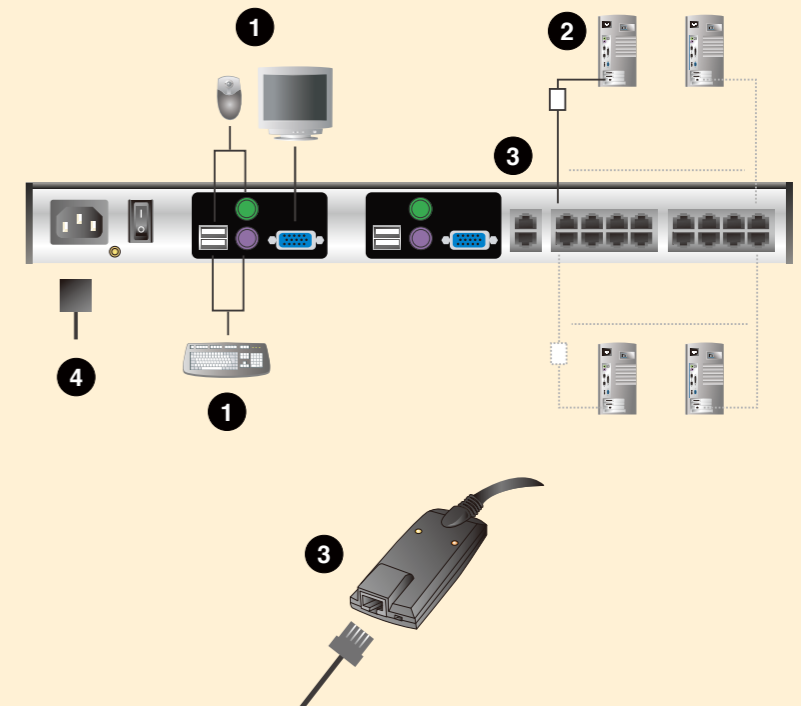
In a single level installation, there are no additional KVM switches cascaded from the first-level KVM switch.

1. Plug a keyboard, monitor, and mouse into the KH2508 / KH2516's Console 1 ports. Each port is color coded and marked with an identifying icon. A second keyboard, monitor, and mouse can be connected to the KH2508 / KH2516's Console 2 ports.
2. Plug the KVM adapter cable connectors into the appropriate ports of the computer you are installing.
3. Use Cat 5e/6 cable to connect a compatible KVM adapter cable to any available KVM port on the KH2508 / KH2516. (Repeat steps 2 and 3 for all computers that you wish to connect. Up to 8 or 16 computers may be connected in this fashion.)

Note: The distance between any KVM adapter cable and switch must not exceed 40 m (130 feet).

4. Plug the power cord into the KH2508 / KH2516's power socket first, then plug the power cord into an AC power source.
5. Turn on the power to the KH2508 / KH2516.

After the KH2508 / KH2516 is powered up, you can turn on the computers.



7

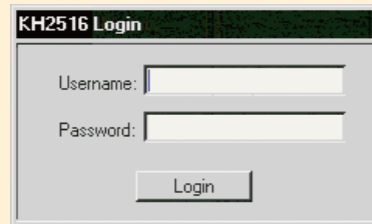
OSD Operation

The KH2508 / KH2516 OSD provides a graphical interface that offers quick and convenient computer access and control.

Logging In

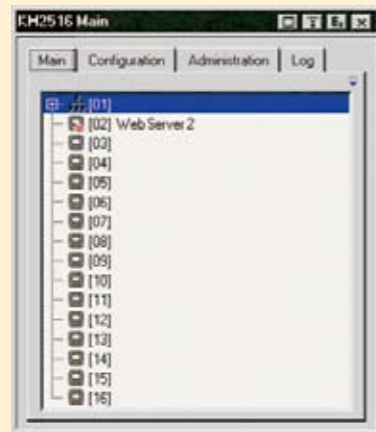
Once the KH2508 / KH2516 has been cabled up, the next step that an Administrator needs to perform is setting the unit up for user operation.

After a keyboard, monitor and mouse have been connected and the KH2508 / KH2516 turned on, a login prompt appears on the console monitor:



Since this is the first time you are logging in, use the default Username: *administrator*; and the default Password: *password*.

After successfully logging in, the OSD appears:



The OSD consists of four pages, each with a specific set of functions: Main, Configuration, Administration, and Log.

Page	Function
Main page	The Main page lists all of the KH2508 / KH2516's ports and governs port access.
Configuration page	The Configuration page allows users to set up their own, individual, working environments.
Administration Page	The Administration page provides four functions: General Information, User Management, System Setting and Date/Time Setting.
Log Page	The Log page displays the system log.

8

Port Operation

Port Operation

Select a port on the OSD Main Screen either by moving the highlight bar to it with the up and down arrow keys and pressing [Enter], or by double clicking it.



Once you select a port, its screen displays on your monitor, and your keyboard and mouse input affects the remote system.

Note: An Administrator selects which ports are accessible to each user.

9

OSD Toolbar

The OSD provides a toolbar to help you control the KH2508 / KH2516 from within the selected port. To bring up the toolbar, tap the OSD Hotkey (Scroll Lock or Ctrl) twice. The toolbar appears at the upper left corner of the screen:



Recalling the OSD

To dismiss the toolbar and bring back the OSD display, do one of the following:

- Tap the OSD Hotkey once.
 - From the toolbar, click the icon that opens the OSD.
- The OSD toolbar closes, and the main OSD display reappears.

10

Specification

Function		KH2508	KH2516
Computer Connections	Direct	8	16
	Max	512 (via Cascade)	4096 (via Cascade)
Port Selection		OSD	
Connectors	Console Ports	Keyboard	2 x 6-pin Mini-DIN Female (Purple); 2 x USB Type A Female
		Video	2 x HDB-15 Female (Blue)
		Mouse	2 x 6-pin Mini-DIN Female (Green); 2 x USB Type A Female
	USB	2 x USB Type A Female	
KVM Ports		8 x RJ-45 Female	16 x RJ-45 Female
Cascade Ports		2 x RJ-45 Female	
FW Upgrade		1 x RJ-11 Female (Black)	
Power		1 x 3-prong AC socket	
Switches	Reset	1 x Semi-recessed pushbutton	
	Power	1 x Rocker	
	F/W Upgrade	1 x Slide	
LEDs	Online	8 (Green)	16 (Green)
	Selected	8 (Orange)	16 (Orange)
	Power	1 (Blue)	
	Cascade	2 (Green)	
Emulation	Keyboard / Mouse	PS/2; USB (PC, Mac, Sun)	
Video		1280 x 1024 @ 75 Hz (40 m max.); 1600 x 1200 @ 60 Hz (30 m max.); DDC2B	
Scan Interval (OSD Select)		1–255 seconds	
I/P Rating		100–240V AC; 50/60 Hz; 1A	
Power Consumption		120 / 230 V; 28 W	120 / 230V; 30 W
Environment	Operating Temp.	0–50° C	
	Storage Temp.	-20–60° C	
	Humidity	0–80% RH; Noncondensing	
Physical Properties	Housing	Metal / Plastic	
	Weight	3.68 kg	3.74 kg
	Dimensions (L x W x H)	43.36x28.78x4.40 cm (19"/1U)	