



## 1 Package Contents

- 1 CC1000 USB Authentication Key
- 1 USB Extension Bracket
- 2 USB Cables (1 External; 1 Internal)
- 1 Software CD
- 1 User Manual
- 1 Quick Start Guide
- 1 Registration Card

**Note:** There are two versions of the CC1000: A Windows Version, and a Java Version (includes Java for Windows and Java for Linux). You cannot install both versions. You must choose between the Windows version and the Java version.

## 2-1 System Requirements

The requirements for the computers running the Windows version of the CC1000 components are given in the table below:

Component	PC Requirements
CC1000 Manager	<ul style="list-style-type: none"> <li>• Windows Server Family<sup>1</sup> with IIS 5.0/6.0 and higher; Certificate Services (CA)<sup>2</sup>, and SNMP configured</li> <li>• At least one network card installed - two are recommended</li> <li>• A USB host controller and USB Type A (F) port installed so that it can accept the CC1000 USB authentication key</li> </ul>
CC1000 Log Server	Windows 2000 / XP / or Windows Server Family <sup>1</sup> with Microsoft Jet Database <b>Note:</b> This component can either be installed on a PC running one of the other components, or on an independent PC.
CC1000 Authentication Server	Windows Server Family <sup>1</sup> with Active Directory (AD); and Certificate Services (CA) configured <b>Note:</b> This component can either be installed on the PC that the CC1000 Manager is on, or on an independent PC.
CC1000 Administrator Utility	Windows 2000 / XP / or Windows Server Family <sup>1</sup> . <b>Note:</b> This component can either be installed on a PC running one of the other components, or on an independent PC.

(Continues on 2-2)

## 2-2 System Requirements

(Continues from 2-1)

**Note:**

1. For the Windows Server Family you can use any of the following Windows operating systems: Windows 2000 Server, Windows 2000 Advanced Server, Windows Server 2003 Standard Edition, Windows Server 2003 Small Business Edition, or Windows Server 2003 Enterprise Edition.
2. All PCs must have all of the latest updates from the Microsoft Update Website installed.
3. All ALTUSEN "Over the NET™" and ATEN "On the NET™" products must be at a firmware level that contains the CC Management function, and the CC Management function must be enabled. Download and install the latest version of the relevant firmware from our website, if necessary.

The software requirements for the computers running the Java version of the CC1000 components are as follows:

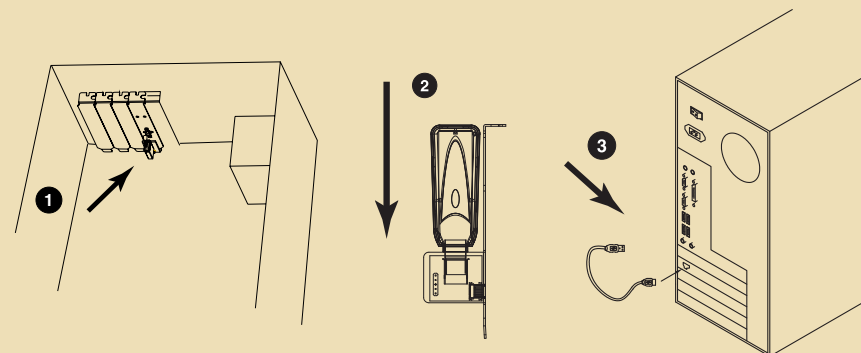
- OS: Windows 2000 / XP / Server Family, or Linux
- Java: SDK 1.4.2 or higher
- OpenLDAP: 2.2.29 or higher (Windows) or 2.1.22 or higher (Linux)

## 3 USB Authentication Key Bracket Installation

For security purposes, the USB Authentication Key can be installed inside the case. To do so, refer to the diagram below as you perform the following steps:

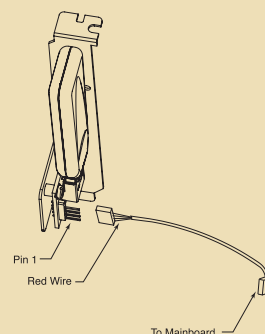
**External Cable Installation**

1. Install the USB key bracket that came with your CC1000 package into one of the computer's expansion slot openings.
2. Plug the USB Authentication Key into the USB socket on the bracket.
3. Plug the bracket cable into one of the computer's USB ports.



**Internal Cable Installation**

1. Perform steps 1 and 2 as above period
2. Plug one end of the USB internal connector cable onto the bracket.
3. Plug the other end of the cable into a USB connector on the mainboard – (see your mainboard manual for the connector's location)



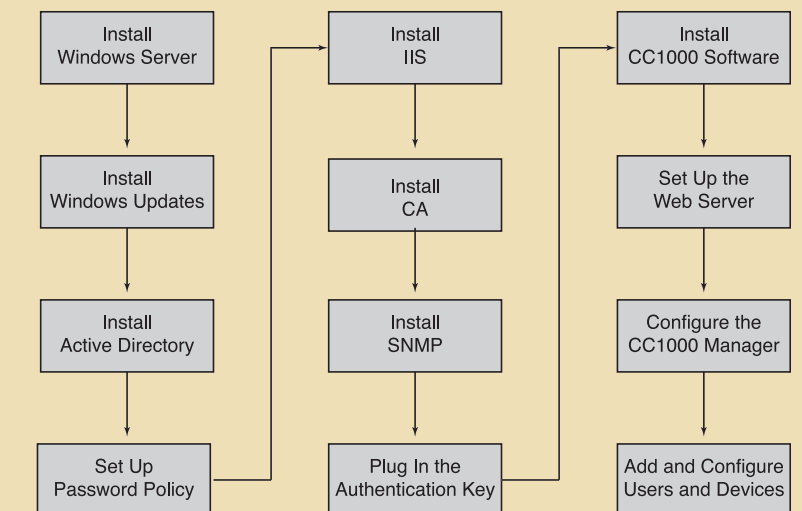
## 4-1 Windows Version Installation

1. Install and set up Windows Server; making sure to install AD (Active Directory), CA (Certificate Authority), and IIS (Internet Information Services).
2. Install and set up the CC1000 server software - making sure that IIS and SNMP have been properly configured, and that the USB key has been plugged into the computer running the CC1000 Server software.
3. Launch the CC1000 Log Server. Configuration of the Log Server must be performed the first time that the program is launched.  
**Note:** If the Log Server is installed on the same machine as the CC1000 Manager, you don't have to launch the Log Server. It will launch automatically when you launch the CC1000 Manager.
4. Launch the CC1000 Manager. Configuration of the CC1000 Manager must be performed the first time that the program is launched.
5. Launch the CC1000 Administrator Utility to add and configure devices and users. These procedures must be performed the first time the program is launched, and whenever device or user information changes.
6. Make sure that ANMS (Authentication Network Management Service) support has been properly set up in your ALTUSEN/ATEN IP devices.

(see flow chart in next panel)

## 4-2 Windows Version Installation – Flow Chart

Installation Overview



**Note:** 1. Installation of Windows updates is optional, but strongly recommended.  
 2. It may be necessary to reboot between the procedures.

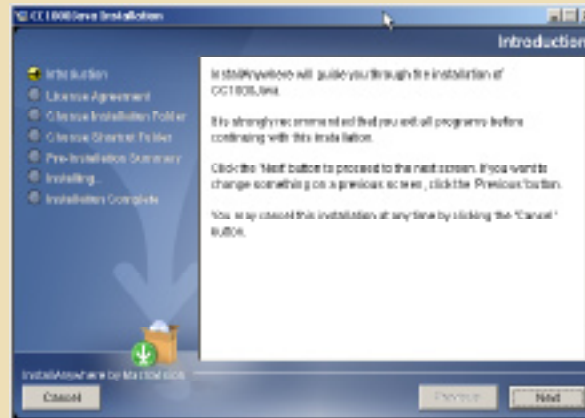
# 5

## Java Version Installation

The CC1000 Java version is available for the Windows and Linux platforms.

1. Install JDK 1.4.2 or higher
2. Install OpenLDAP (2.2.29 or higher for Windows, or 2.1.22 or higher for Linux)
3. Run the CC1000J Setup program:
  - Windows: Run CC1000J-Setup-<version>-ForWindows.exe (where <version> represents the actual version number of the program).
  - Linux: As the root user, run CC1000J-Setup-<version>-ForLinux.bin (where <version> represents the actual version number of the program).

A screen similar to the one below appears:



4. Click Next to start the installation.
5. Follow the installation wizard screens to complete the installation.

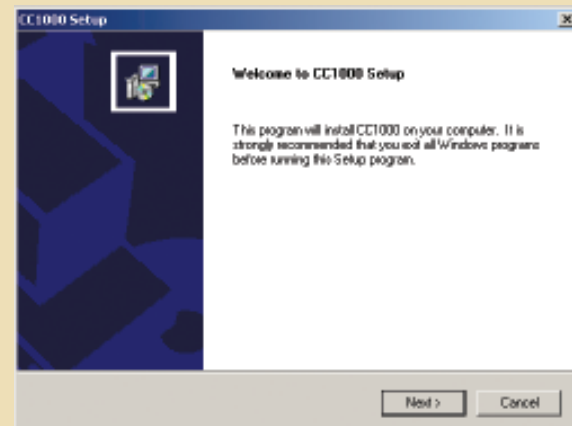
# 6

## CC1000 Server Setup

Before installing the CC1000 Server software, we strongly recommend that you download and install all the updates for the Windows 2000/2003 server.

CC1000 Server is the web server component of the CC1000 system. It provides the entry point for users when they log in. To install CC1000 Web Server:

1. Plug the CC1000 USB Authentication Key into a USB port on the computer you are installing the CC1000 Server on. For security purposes, the key can be installed inside the case.
2. Copy CC1KSetup.exe from the software CD that came with your package to a convenient location on your server.
3. Go to the folder where CC1KSetup.exe is located, and execute it. The CC1000 Welcome screen appears:



4. Click next and follow the dialog box procedure.

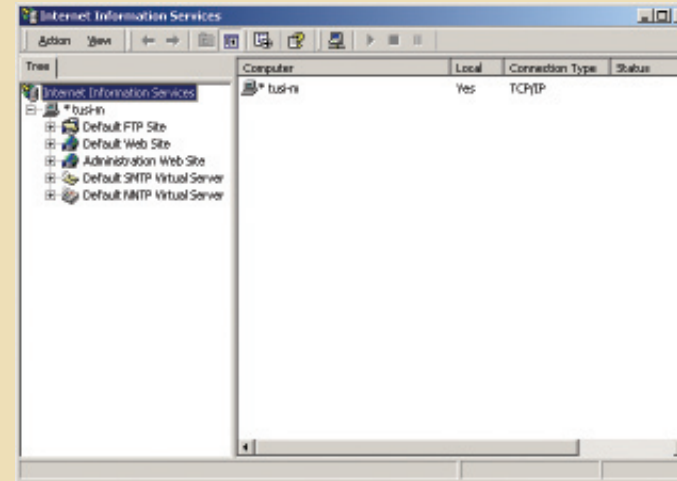
# 7

## Web Server Setup

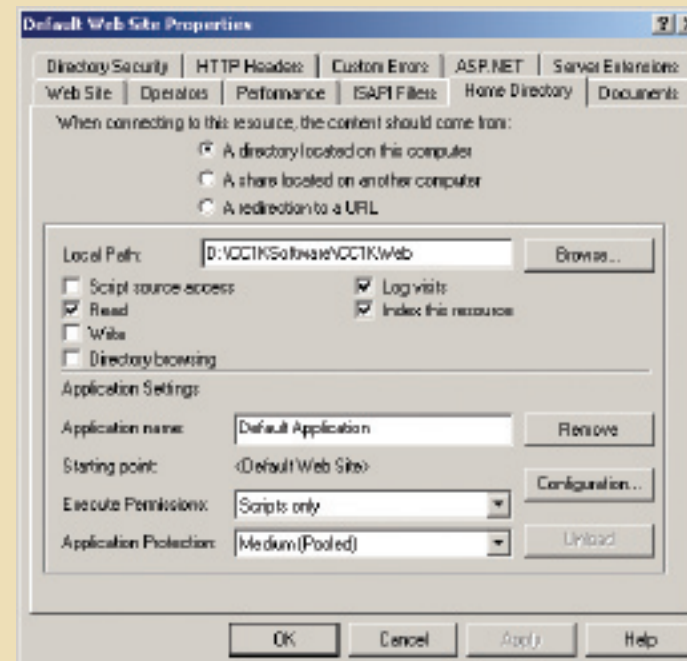
### Configure the Default Website

When you installed IIS, it was preconfigured to serve as a default Web site. You now need to change some of the settings, as follows:

1. For Windows 2000 Server, open Control Panel → Administrative Tools → Internet Services Manager. For Windows Server 2003, open Control Panel → Administrative Tools → Internet Information Services. A screen similar to the one below appears:



2. In the left panel, right click Default Web site. In the menu that pops up, click Properties.
3. In the Default Web Site Properties dialog box that comes up, select the Home Directory tab. A screen similar to the one below appears:



4. Select the Home Directory tab; select a directory located on this computer (this must be the CC1000 destination folder that you previously specified when you installed the CC1000 program.
  - Note:** The CC1000 web pages are put in the CC1Kweb directory under the CC1000 destination folder. The default directory is c:\CC1Ksoftware\CC1KWeb.
5. Check Read; and Scripts Only (For Windows 2000 server only).
6. Click OK

# 8

## Operation

### Logging In

To log into the CC1000, do the following:

1. Open the browser and specify the IP address of the CC1000 in the browser's URL location bar.
2. When the Security Alert dialog box appears, accept the certificate. The Login page appears:



3. Provide your CC1000 Username and Password, then click Login.

If you are the super administrator, and are logging in for the first time, use the default Username: **superadmin**, and the default Password: **CC1KPassword**.

**Note:** The Username for this account is superadmin; the password is **CC1KPassword**. The password is case sensitive. For security purposes, we strongly recommend changing the password to something unique.

After you have successfully logged in, the CC1000 Main Screen appears:

