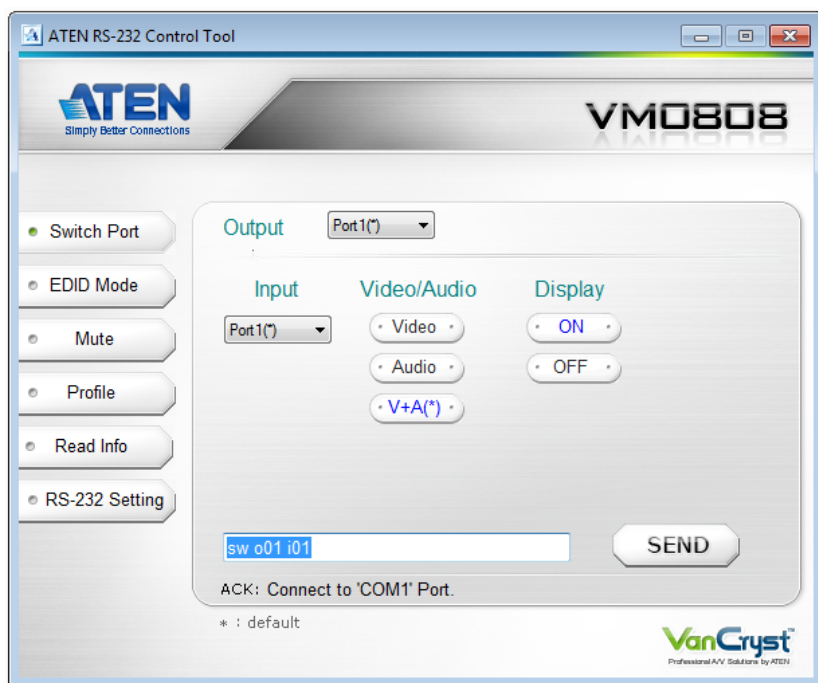


VM0808 Video Matrix Switch + Audio RS-232 Control Tool

V1.0.064

User Manual



FCC Information

This is an FCC Class A product. In a domestic environment this product may cause radio interference in which case the user may be required to take adequate measures. This equipment has been tested and found to comply with the limits for a Class A digital device, pursuant to Part 15 of the FCC Rules. These limits are designed to provide reasonable protection against harmful interference when the equipment is operated in a commercial environment. This equipment generates, uses and can radiate radio frequency energy and, if not installed and used in accordance with the instruction manual, may cause harmful interference to radio communications. Operation of this equipment in a residential area is likely to cause harmful interference in which case the user will be required to correct the interference at his own expense.

- ◆ Reorient or relocate the receiving antenna;
- ◆ Increase the separation between the equipment and receiver;
- ◆ Connect the equipment into an outlet on a circuit different from that which the receiver is connected;
- ◆ Consult the dealer or an experienced radio/television technician for help.

RoHS

This product is RoHS compliant.

SJ/T 11364-2006

The following contains information that relates to China.

部件名称	有毒有害物质或元素					
	铅	汞	镉	六价铬	多溴联苯	多溴二苯醚
电器部件	●	○	○	○	○	○
机构部件	○	○	○	○	○	○

- : 表示该有毒有害物质在该部件所有均质材料中的含量均在SJ/T 11363-2006规定的限量要求之下。
- : 表示符合欧盟的豁免条款，但该有毒有害物质至少在该部件的某一均质材料中的含量超出SJ/T 11363-2006的限量要求。
- ×: 表示该有毒有害物质至少在该部件的某一均质材料中的含量超出SJ/T 11363-2006的限量要求。



RS-232 Control Tool Operation

Overview

The VM0808's built-in bi-directional RS-232 serial interface allows system control through a high-end controller, PC, and/or home automation / home theater software package. The RS-232 Control Tool is an application used to send operational commands from your PC – to the VM0808 through a serial (RS-232) interface connection. RS-232 serial operations to and from the VM0808 can be managed using ATEN's Graphical User Interface (GUI) on computers that are running the Microsoft Windows operating system. In order to use the RS-232 Control Tool, two separate programs must be installed on the PC- .NET Framework 2.0 and the RS-232 Control Tool. The procedure for installing and operating the RS-232 Control Tool is detailed in the following section.

Before You Begin

Installing .NET Framework 2.0

To install .NET Framework on your PC, do the following:

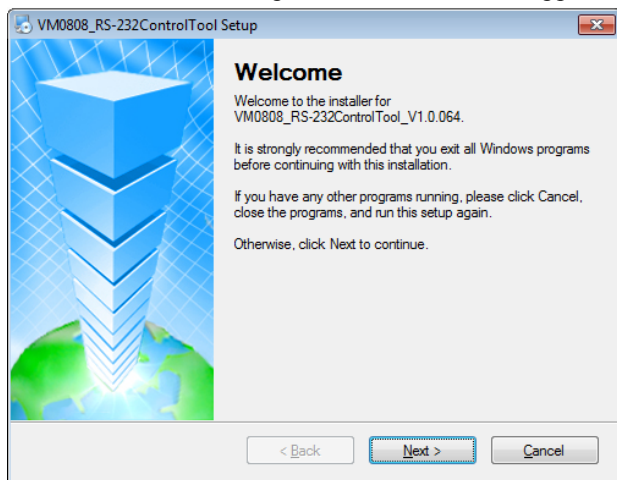
1. Download the executable file from the ATEN website or the Microsoft Download Center online, and run it.
2. Follow the instructions on the screen. The installation applet will automatically detect the operating system and install the correct drivers

Installing the RS-232 Control Tool

To install the RS-232 Control Tool, do the following:

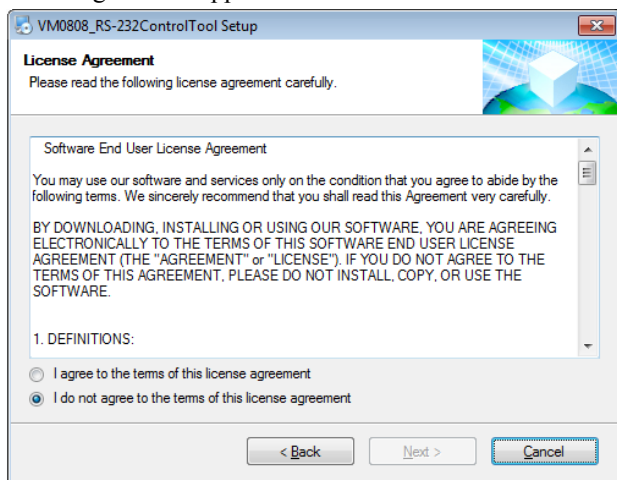
1. Download the RS-232 Control Tool from the Download or VM0808's *Resource* page on our website:
`www.aten.com`
2. Save the file to a convenient location.

3. Double click the file to run setup. The Welcome screen appears:



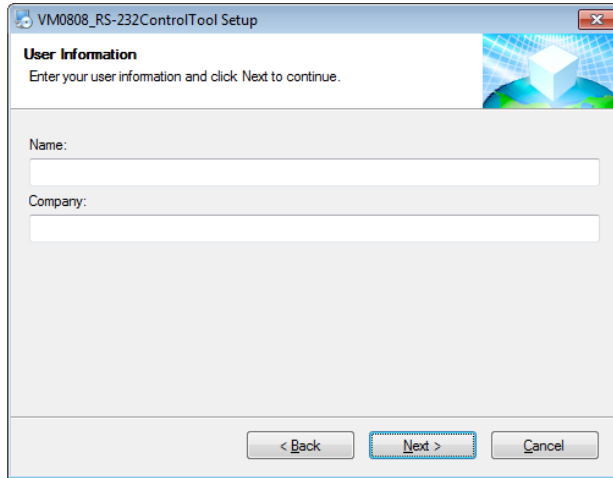
Click **Next**.

4. The License Agreement appears:



If you agree with the License Agreement, select *I agree with the terms of this license agreement*, and click **Next**.

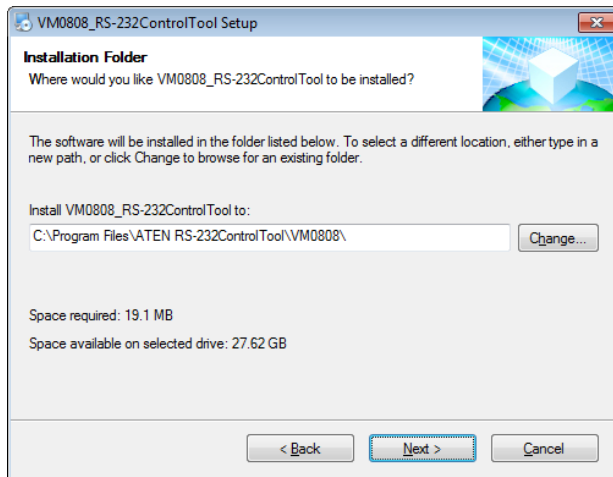
5. The User Information screen appears:



The screenshot shows a Windows-style setup window titled "VM0808_RS-232ControlTool Setup". The window has a blue header bar with a small icon on the left and a close button (X) on the right. Below the header, the title "User Information" is displayed in bold, followed by the instruction "Enter your user information and click Next to continue." To the right of the text is a graphic of a blue cube on a globe. Below the instruction are two text input fields: "Name:" and "Company:". At the bottom of the window are three buttons: "< Back", "Next >" (which is highlighted with a blue border), and "Cancel".

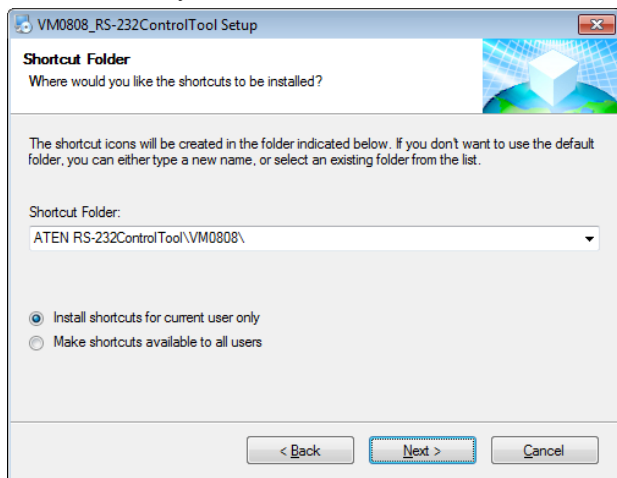
Fill in your *Name* and *Company*, then click **Next**.

6. When the Installation Folder screen appears, you can select where you want to install the program by clicking **Change**, or use the default installation location provided, then click **Next**.



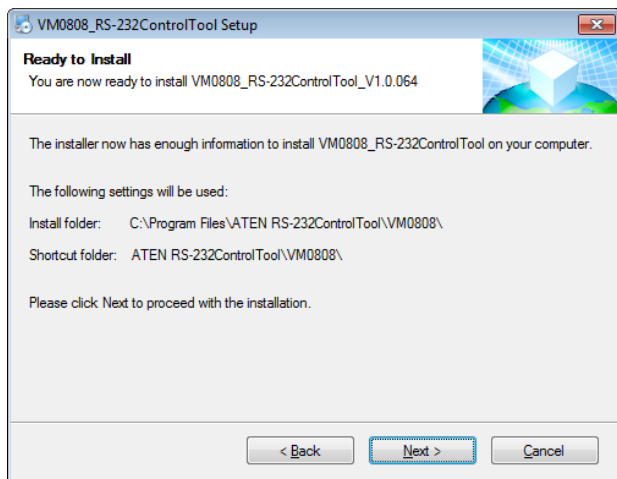
The screenshot shows a Windows-style setup window titled "VM0808_RS-232ControlTool Setup". The window has a blue header bar with a small icon on the left and a close button (X) on the right. Below the header, the title "Installation Folder" is displayed in bold, followed by the question "Where would you like VM0808_RS-232ControlTool to be installed?". To the right of the text is a graphic of a blue cube on a globe. Below the question is a paragraph of text: "The software will be installed in the folder listed below. To select a different location, either type in a new path, or click Change to browse for an existing folder." Below this text is a text input field labeled "Install VM0808_RS-232ControlTool to:" containing the path "C:\Program Files\ATEN RS-232ControlTool\VM0808\". To the right of the input field is a "Change..." button. Below the input field are two lines of text: "Space required: 19.1 MB" and "Space available on selected drive: 27.62 GB". At the bottom of the window are three buttons: "< Back", "Next >" (which is highlighted with a blue border), and "Cancel".

7. From the Shortcut Folder screen type in or use the drop-down menu to enter the folder where you want to install the shortcuts.

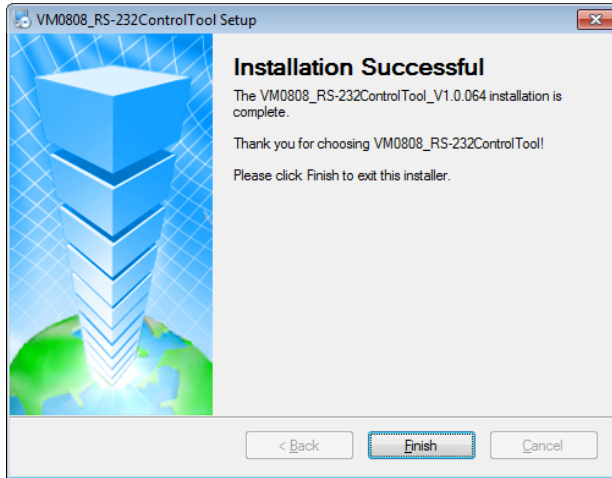


Then select *Install shortcuts for current user only*, or *Make shortcuts available to all users*, and click **Next**.

8. At the Ready to Install screen confirm your settings, click **Back** if you need to make changes, or click **Next** to begin the installation.



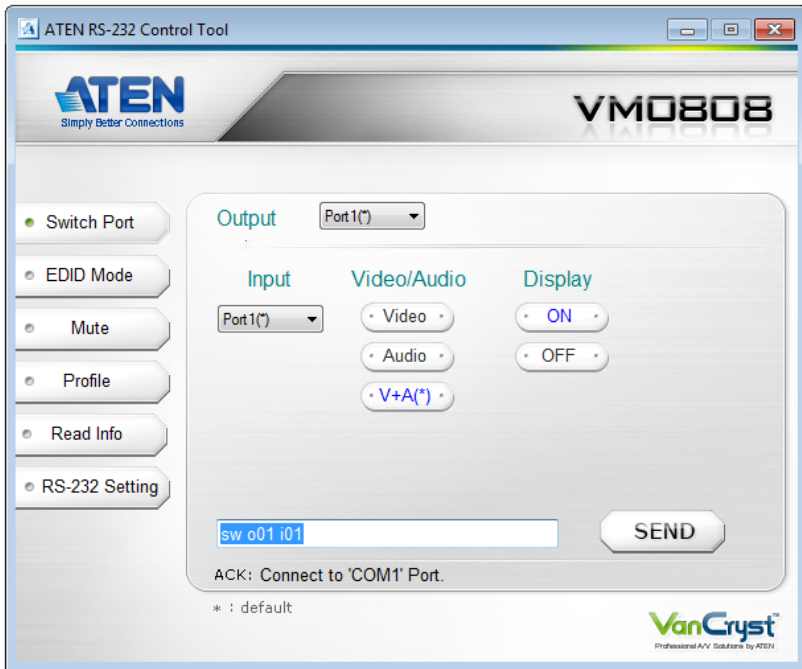
9. When the installation has completed successfully, the following screen will appear:



Click **Finish**. You are now ready to use the RS-232 Control Tool.

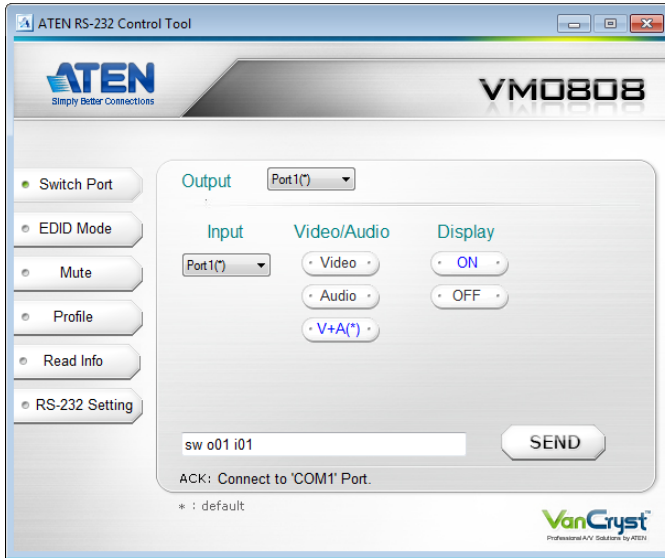
GUI Main Page

The RS-232 Control Tool is a convenient and intuitive application to send RS-232 commands to your VM0808. For detailed information about the function of each RS-232 command, see the VM0808's user manual. To invoke the GUI, simply click the RS-232 Control Tool shortcut. The interface opens on the *Switch Port* page by default, as shown below:



The various elements of the GUI are described in the following sections.

Switch Port



The Switch Port page is used to connect Video/Audio source and display ports, and to power on/off displays. On the Switch Port page, the following actions are possible:

- ◆ Select the **Output** port from the drop-down menu (options are Ports 1–8, *). * = all ports
- ◆ Select the **Input** port from the drop-down menu (options are Ports 1–8).
- ◆ Select **Video** to switch the video source for the selected *Output* port to the selected *Input* port.
- ◆ Select **Audio** to switch the audio source for the selected *Output* port to the selected *Input* port.
- ◆ Select **V+A(*)** to switch the video and audio source for the selected *Output* port to the selected *Input* port
- ◆ Switch the Display **ON** or **OFF** for the selected *Output* port.
- ◆ Select your commands or use the text box to manually enter the command
- ◆ Click **SEND** to send the command.

Switch Port Commands

The actions can also be performed by keying the command into the text box, and clicking **SEND**.

The available formulas for Switch Port commands are as follows:

1. Switch Command + Output Command + Port Number + Input Command + Port Number

For example, to switch output port 02 (video and audio) to input port 05, type the following:

sw o02 i05

2. Switch Command + Output Command + Port Number + Control

For example, to turn the output display off on port 03, type the following:

sw o03 off

3. Switch Command + Output Command + Port Number + Input Command + Port Number + Control

For example, to switch output port 04 (video only) to input port 05, type the following:

sw o04 i05 video

Possible Values

The following table shows the possible values for switch commands:

Command	Description
sw	Switch command

Input Command	Description
i	Input command

Input Port Number	Description
xx	01-08 port (default is 01)
l1	Local input port

Output Command	Description
o	Output Command

Output Port Number	Description
yy	01-08 port (default is 01)

Output Port Number	Description	
l1	Local output port	
*	All output ports	

Control	Description	
on	Turn on	
off	Turn off	
+	Next port	
-	Previous port	
video	Switch video only	blank = video+audio
audio	Switch audio only	

Enter	Description	
[Enter]	Enter and send out the command	

Switch Port Command Table:

Cmd	In	N1	Out	N2	C1	C2	Description
SW	i	xx	o	yy *	video audio		Switch Input Port xx to Output Port yy (xx:01~08; yy:01~08, *)
SW			o	yy *	video audio	on off	Turn on Output Port yy Turn off Output Port yy (yy:01~08, *)
SW			o	yy *	video audio	+ -	Switch Next Input to Output Port yy Switch Previous Input to Output Port yy (yy:01~08, *)

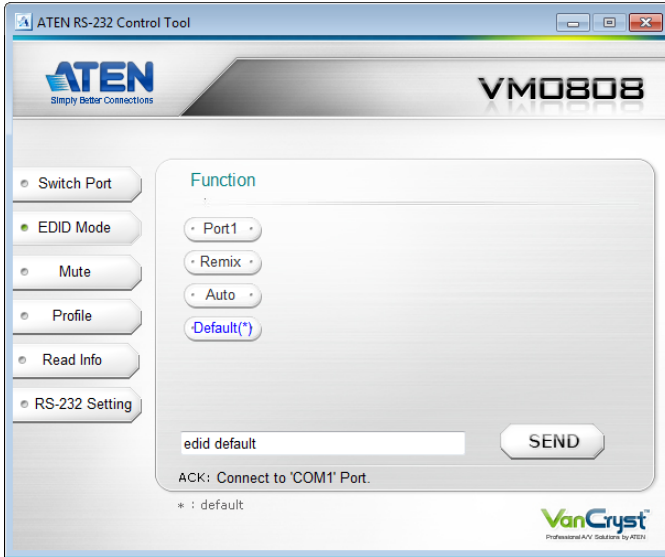
After commands are sent acknowledge messages are returned.

Ack	Description
Command OK	Command is correct and function executed
Command Incorrect	Unavailable command or parameters

Note: 1. Each command string can be separated with a space.

2. The **Port Number** command string can be skipped, and the default value will be used.

EDID Mode



The EDID Mode page is used to set the EDID setting for the displays. The EDID Mode page provides four options – Port1, Remix, Auto, and Default, as explained below.

- ◆ **Port1**: The EDID from port1 will be passed to all video sources.
- ◆ **Remix**: Uses the EDID of each connected display according to its connection when the VM0808 is first powered on, or immediately after pressing ENTER to select the Remix option.
- ◆ **Auto**: The EDID will automatically be selected and passed to each video source.
- ◆ **Default**: The default EDID will be passed to all video sources.
- ◆ Select the command or use the text box to manually enter the command.
- ◆ Click **SEND** to send the command.

EDID Commands:

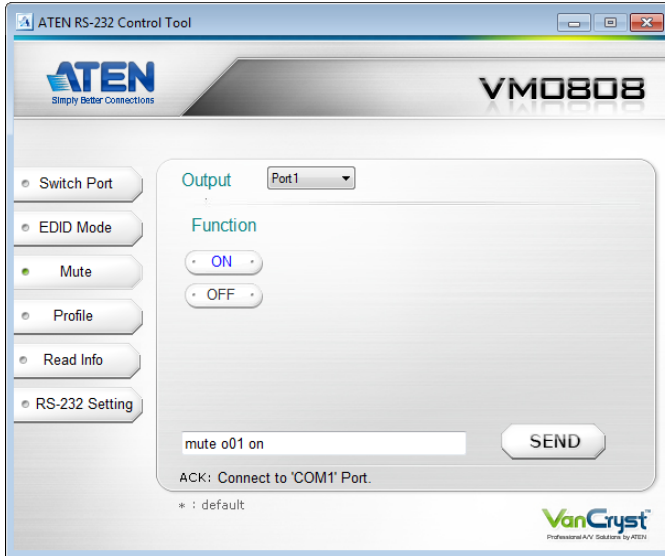
The actions can also be performed by keying the command into the text box, and clicking **SEND**.

1. EDID Command + Control

For example, to change EDID to use the Port1 setting, type the following:

edid port1

Mute



The Mute page is used to turn audio on or off for an output port. On the Mute page, the following actions are possible:

- ◆ Select an **Output** port from the drop-down menu.
- ◆ Click **ON** to mute the selected port.
- ◆ Click **OFF** to enable the audio of the selected port.
- ◆ Select the command or use the text box to manually enter the command.
- ◆ Click **SEND** to send the command.

Mute Commands:

The actions can also be performed by keying the command into the text box, and clicking **SEND**.

1. Mute Command + Output Command + Port Number + Control

For example, to mute the audio for output port 05, type the following:

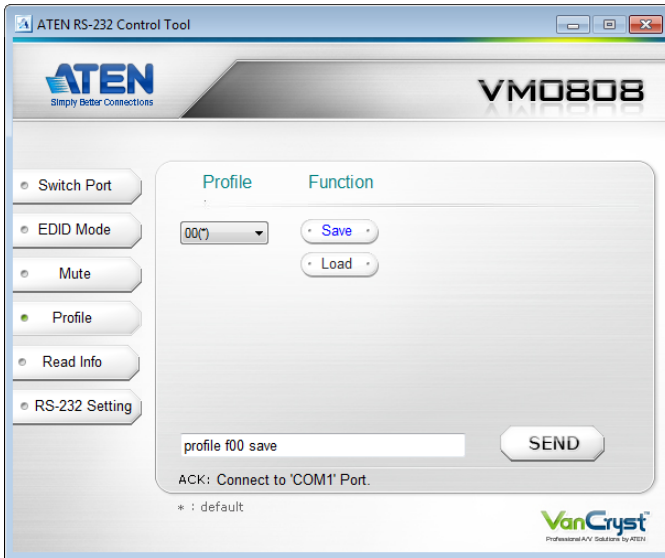
mute o05 on

2. Mute Command + Output Command + Port Number + Control

For example, to turn on the audio for output port 05, type the following:

mute o05 off

Profile



The Profile page is used to Save/Load connection profiles stored on the VM0808. On the Profile page, the following actions are possible:

- ◆ Select a **Profile** number from the drop-down menu (options are 00–31; the default is 00)
- ◆ Click **Save** to save the current connection profile as the selected number.
- ◆ Click **Load** to load the saved profile.
- ◆ Use the text box to manually enter the command.
- ◆ Click **SEND** to send the command.

Save / Load Profile Commands:

The actions can also be performed by keying the command into the text box, and clicking **SEND**.

1. Command + Profile + Number + Control

For example, to save the current configuration to profile 12, type the following:

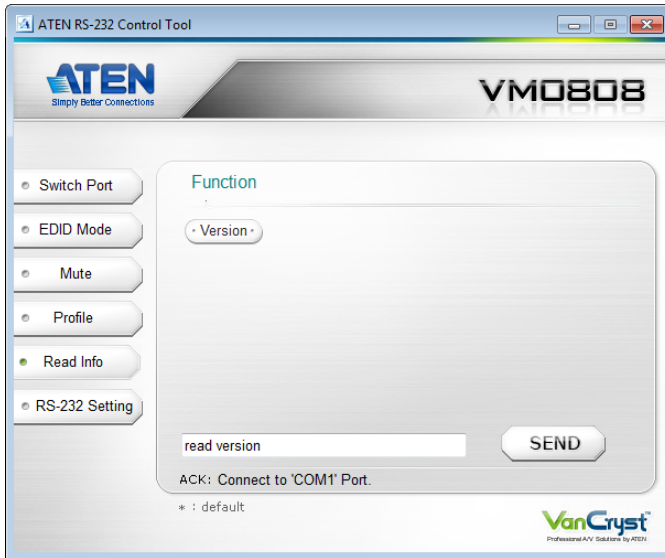
profile f12 save

2. Command + Profile + Number + Control

For example, to load profile 12, type the following:

profile f12 load

Read Info



The Read Info page is used to get the VM0808's firmware version. Select **Version**, then click **SEND**.

Read info Command:

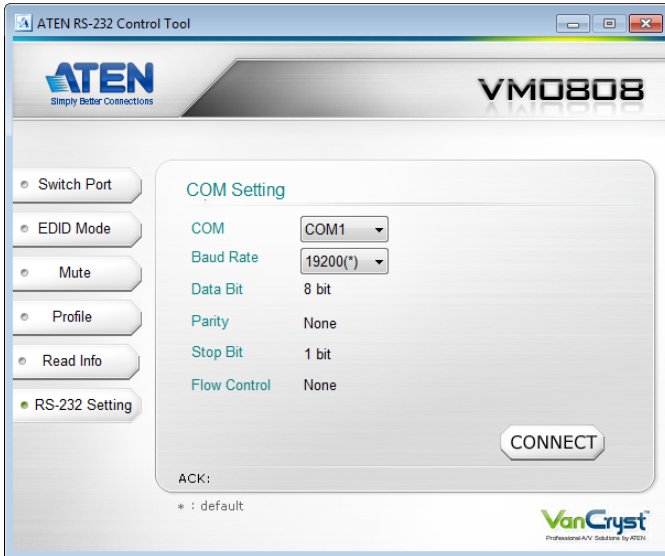
The actions can also be performed by keying the command into the text box, and clicking **SEND**.

1. Command

For example, to read the firmware version of the VM0808, type the following:

read version

RS-232 Setting



On the RS-232 Settings page, the serial port should be configured as follows:

Baud Rate	19200
Data Bits	8
Parity	None
Stop Bits	1
Flow Control	None

From the RS-232 Settings page you can set the COM serial port and Baud Rate. To select the serial port or Baud Rate, do the following:

- ♦ Select a port or Baud Rate from the drop-down menu and click **CONNECT**.

If the port connection exists, the *Acknowledgment* message will read:

Open port 'COM1' successfully.